

Date 31 Aug. 2012. Black Sugarloaf, Birrale (big tree track).

Habitat: Closed wet Eucalypt forest.

Substrate: Strongly decayed *Pomaderris apetala* under THE dogwood.

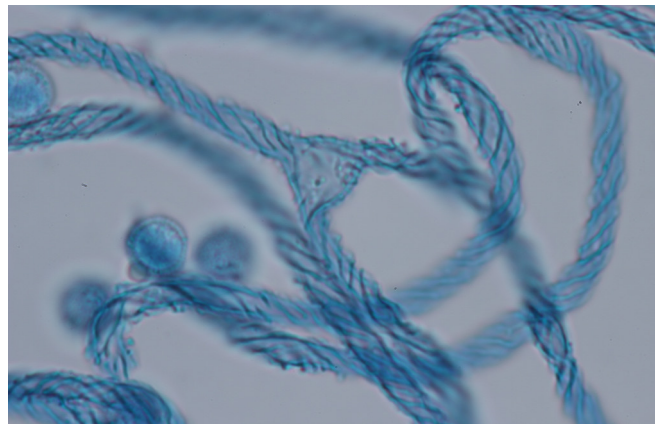
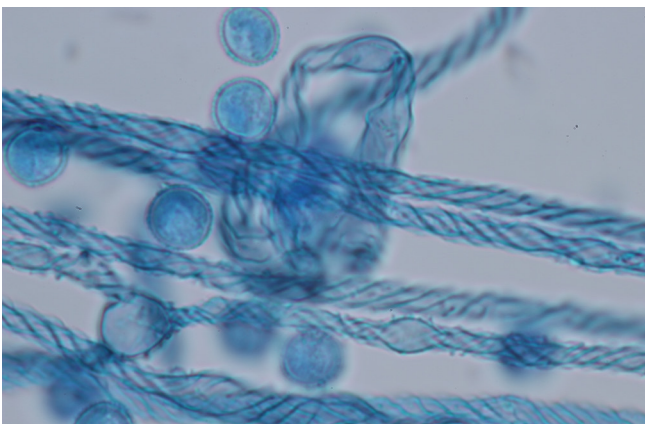
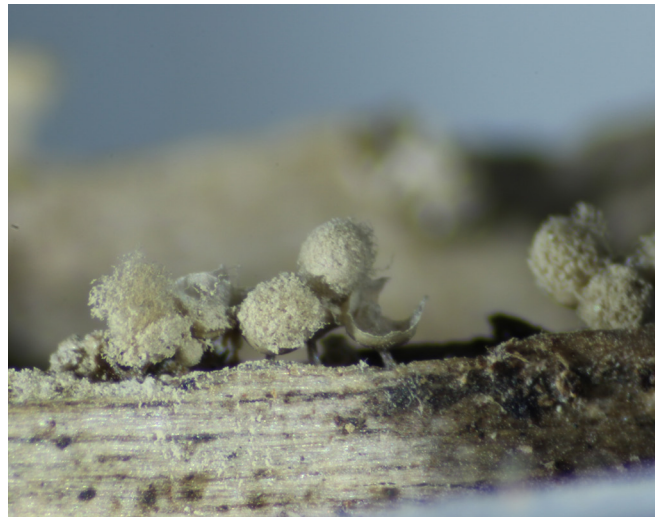
Description: Several small clusters of stalked 1 mm high spherical greyish white sporangia on shiny hypothallus.

Peridium: Fugacious except for membranous calyculus which has fine ridges (viewed with oil immersion lens).

Stalk: 0.2–0.3 mm long, brown. **Capillitium** decorated with thin spiral bands, some swellings and free ends, 3 μ m diameter.

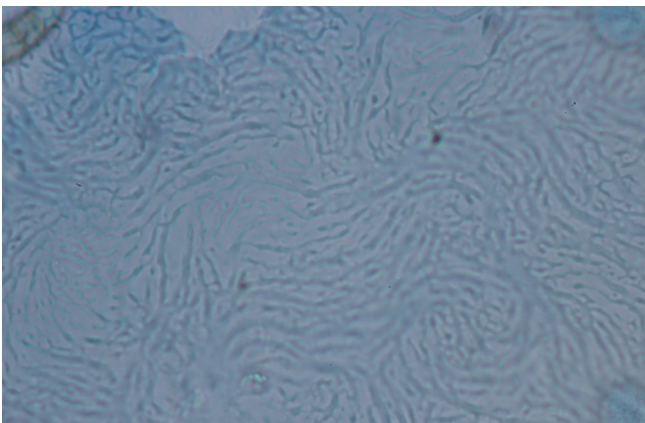
Spores: 6.5–7.5 μ m with some warts.

Notes: Several collections (SJL 316 and 108) accessed from the National Herbarium of Victoria (MEL) and returned in March 2018 were determined by I. García-Cunchillos working on Trichiales for his PhD at the Real Jardin Botánico, Madrid, Spain. <http://www.myxotropic.org/our-team-has-grown/>

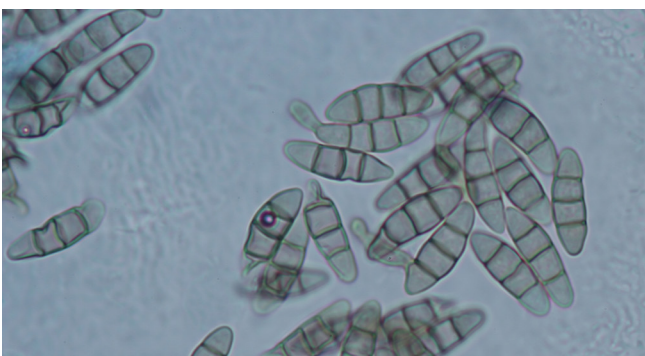


Capillitium decorated with thin spiral bands, some swellings and free ends, 3 μ m diameter.

Spores: 6.5–7.5 μ m with some warts. (Stained with lacto phenol cotton blue.)



Peridium: Fugacious except for membranous calyculus which has fine ridges (viewed with oil immersion lens).



Organisms found on calyculus 1000x.